

An expressive oil painting of a couple embracing. The man, with dark hair and a beard, is seen from the side, his face partially obscured by shadows. The woman, with blonde hair, is leaning into him, her face looking down. They are surrounded by lush green foliage and several bright orange fruits, possibly lemons or oranges, hanging from a branch above them. The style is painterly and emotional, with visible brushstrokes and a rich color palette.

This Is Where We Meet

CAROUSEL

35 Baker St, London,
W1U 8EN

This Is Where We Meet

Michael Chance

Geraint Evans

Bobbye Fermie

Archie Franks

Joana Galego

Melissa Kime

Rachel Mercer

Tim Patrick

Fraser Scarfe

Eleanor Watson

CAROUSEL



Supported using public funding by
**ARTS COUNCIL
ENGLAND**

Carousel Next Door
71 Blandford Street
Marylebone, London, W1U 8AB

6th - 31st
January 2021
10am-6pm



Eleanor Watson
Dresser
Oil on paper
33x23cm

Foreword

You're not sure what ghost this is that bears down on you, you're not sure what depths that dark holds out beyond the curtains. Rachel Mercer's and Bobbye Fermie's paintings - the canvas such a cold-sweat tussle, the watercolour so poised and expectant - stake out the enclosure that the present ten imaginations inhabit. This Is Where We Meet is a meeting in a pressurized chamber. There is a weight coming down on these artists that all of them acutely sense, even if they might lend it differing names. The city; the city's tangles of lives and detritus and histories; the city's demise, perhaps; most generally, the awareness of a fraught, turbid communal experience that it is the artist's business to register.

More particularly, the pressure is sustained by the companionability that this clutch of young artists have nurtured, a few years on from their graduations. At their backs there is also a shared grounding in observational drawing, for the most part via the liferooms and such like classes of the Royal Drawing School. A shared power. Just look round this show if you ever worry that the experience of using line to interpret visual data might tie an artist down to a constricting tradition. Each of these ten has pushed forward to establish a distinctive personal language - or in the case of the capacious Michael Chance, several! - and the circle that binds them is virtuous, one of mutual encouragement. Exhibiting at this stage in their careers, they exhibit a particular earnest intensity: witness the poignantly emotive interiors of Tim Patrick, or Joana Galego's intricate reveries about relationships. Equally, we encounter the will to reflect on the contemporary condition, pursued contrastingly on the one hand by Geraint Evans in his magnificently panoptic *The Closer We Are* and on the other by Archie Franks in his wry, painfully funny fragmentations.

Pushed from behind by responsibilities to the world at large and likewise by peer group pressure, the artist naturally hopes to press onward into uncovered ground, discovering fresh and wonderful marks and images. Melissa Kime plunges furthest into the oneiric, mythic reaches that picturing possesses and that counter the notion of making fact its basis. Closer to the centre of that spectrum are the exuberant graphic achievements of Eleanor Watson and Fraser Scarfe - hers dazzling indoors performances, his all gusty and gutsy plein-air. This is not a lightweight show, but that does not mean it lacks in delight. There is pressure, but there is also release.

Julian Bell
13 December 2020

Paintings



Michael Chance

Michael Chance is a British painter living and working in London. He earned his Postgraduate Diploma in Drawing at The Royal Drawing School in London. His educational and personal interests have influenced his thematic exploration which is politically and philosophically charged, through drawing and painting. These influences contribute to his modern, cinematic and personal painting.



No fly tipping

Oil on paper

225x153cm

Michael Chance

£3500

email: info@carousel-london.com



Modern Melancholy

Ink on paper
27 x 21cm

£650

email: info@carousel-london.com



Commuter Belt

Ink on paper

27 x 21cm

Michael Chance

£650

email: info@carousel-london.com



The End of Farm Lane

Ink on paper
27 x 21cm

£650

email: info@carousel-london.com



Interior (study)

Oil on board

26 x 20cm

Michael Chance

£750

email: info@carousel-london.com



Interior

Oil on canvas

40x50cm

Michael Chance

£950

email: info@carousel-london.com





Geraint Ross-Evans

Geraint Ross Evans was born in 1988 in Caerphilly and grew up in Cardiff, Wales. He studied at Swansea Metropolitan University in 2009 (BA (Hons) in Fine Art) and Royal Drawing School postgraduate programme (2014-15). He was awarded the Directors Prize and shortly after and The Richard Ford Award from Royal Academy of Arts. Geraint's studio is now based in Cardiff; he continues to work and teach between Cardiff and London.

From small sketches through to accomplished large-scale drawings, drawing from observation has always been central to Geraint's practice. Often combining artistic disciplines, his themes are built around the central concern of the individual's experience, in both the visual, political and physical geography of place.

Cardiff Rivers Group (Llandaff Weir)

Charcoal on Paper

48x122cm

Geraint Ross Evans

£1500

email: info@carousel-london.com



The Closer We Are
Charcoal on Paper
48x366cm
Geraint Ross Evans
£2500



3 Cardiff Rivers Group Study (Descent)

Charcoal on paper

30x18cm(Aprox)

Geraint Ross Evans

£100

email: info@carousel-london.com



Cardiff Rivers Group Study

Charcoal on paper

28x52cm(Aprox)

Geraint Ross Evans

£150

Cardiff Rivers Group Study (Drag)

Charcoal on paper

Geraint Ross Evans

£175

email: info@carousel-london.com





Cardiff Rivers Group Study (Wader)
Charcoal on Paper
20 x 20cm (Aprox)
Geraint Ross Evans

£95

email: info@carousel-london.com



Camo Jacket Study

Brush and Ink

30 x 45cm (Aprox)

Geraint Ross Evans

£200

email: info@carousel-london.com



Bobbye Fermie

Bobbye Fermie (b. 1990, Amsterdam, The Netherlands) completed the post-graduate programme The Drawing Year at the Royal Drawing School in 2015 after finishing her BA in Site Specific Art at the Royal Academy of Fine Art Antwerp. Bobbye's work mainly consists of dreamlike watercolours in which she portrays a sense of intimate stillness and softness that she relates to an introverted character. Bobbye is interested in highlighting the intimacy within the home setting and imagining a centre stage for her characters. She currently lives and works in London.



Laundry Sunday
Watercolour on paper
6.9x5.5cm
Bobbye Fermie

£250

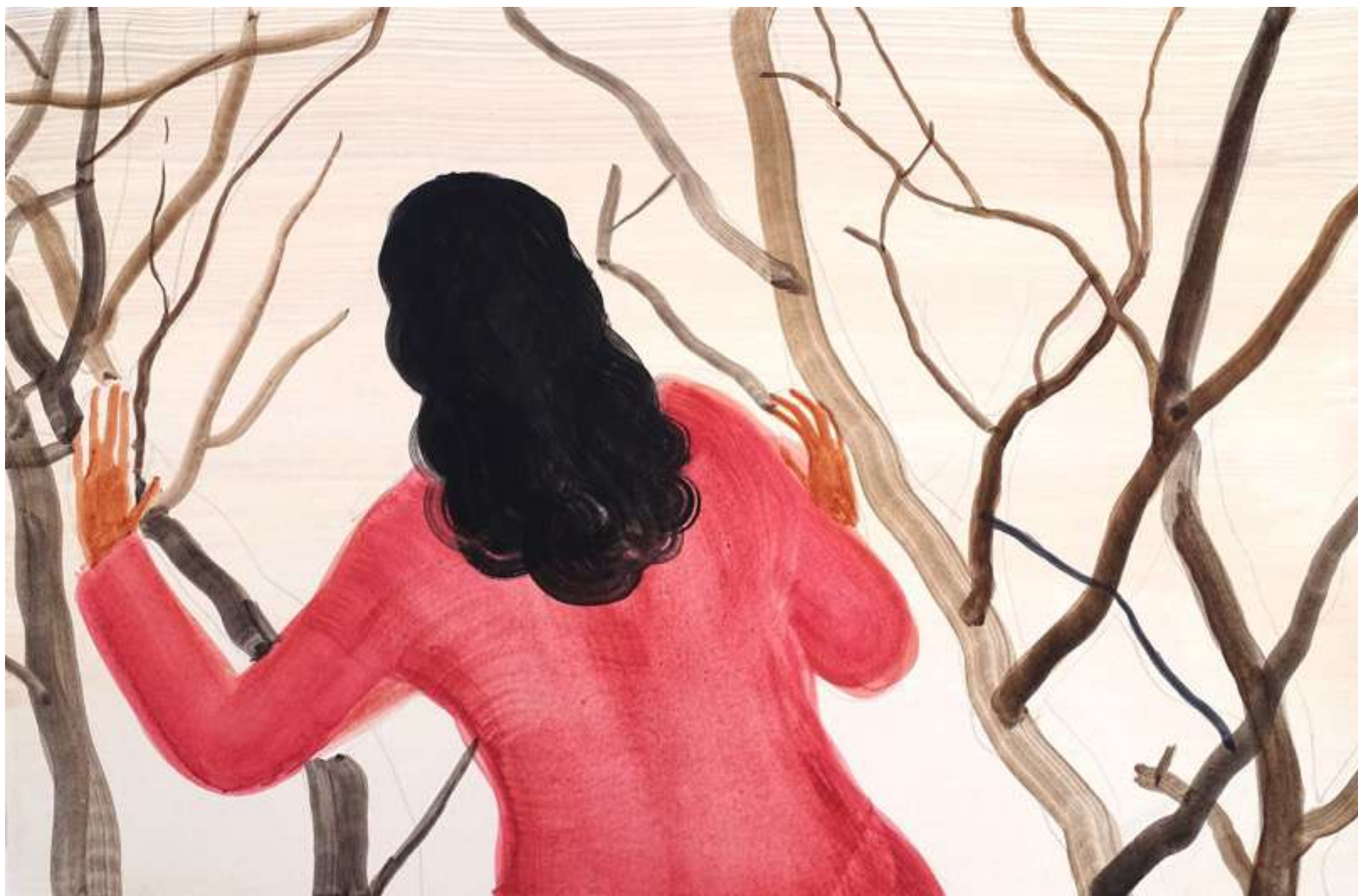
email: info@carousel-london.com



Before the Night
Watercolour on paper
34x21cm on Paper
Bobbye Fermie

£650

email: info@carousel-london.com



When Everyone Leaves

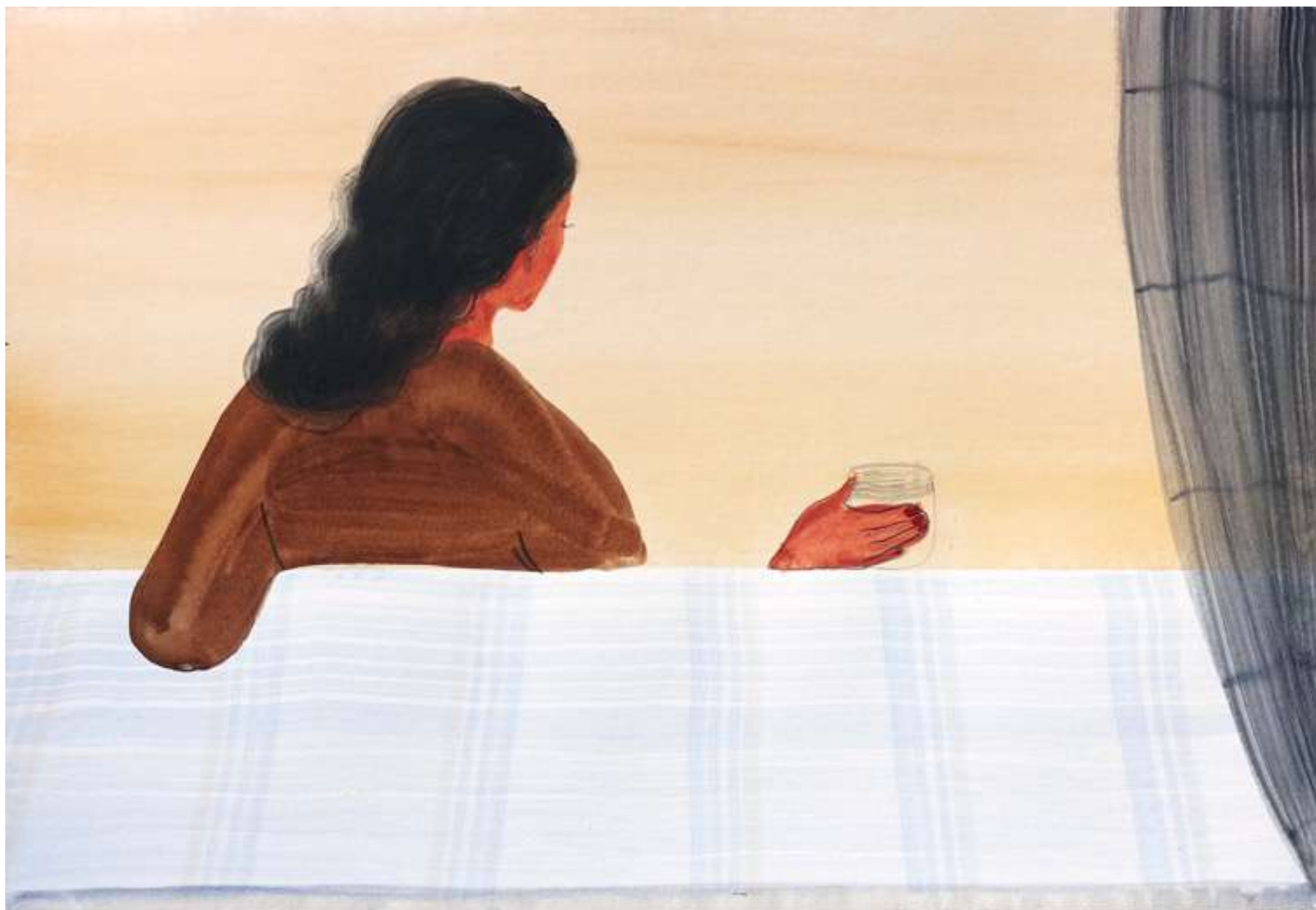
Watercolour on paper

34x21cm

Bobby Fermie

£650

email: info@carousel-london.com



Waiting For You
Watercolour on paper
48x122cm
Bobbye Fermie

£650

email: info@carousel-london.com



Making the Bed
Watercolour on paper
7x5.3cm
Bobbye Fermie

£250

email: info@carousel-london.com





Archie Franks

Franks holds his post graduate diploma, The Royal Academy Schools, 2012, and a First-Class BA, Honours, City & Guilds London Art School, 2009. The artist is the recipient of various awards and honours including the Jerwood Painting Fellowship, 2016, the Sainsbury Scholarship in Painting, The British School at Rome 2013; Tooth Award 2012; Gordon Luton Award 2012; Richard Ford Award, 2011; and the Philip T Ribbon Award, 2011.

"I use imagery from popular culture, leisure and consumer culture and my own everyday and history and mix it in with grand eras of art history, such as the baroque and rococo as well as major 20th century styles. The way I paint is a way to filter through memories and images from the culture that surrounds me and a way to render the familiar strange." - Franks

Monster Munch with Moon

Oil on canvas

153x27cm

Archie Franks

£3000

email: info@carousel-london.com



Seagulls (after Martin Parr)

Oil on canvas

32x57cm

Archie Franks

£3000

email: info@carousel-london.com

Joana Galego

Joana was born in 1994 in Cascais, Portugal, studied Painting at the Faculty of Fine Arts of the University of Lisbon and moved to London in 2016 for the Drawing Year. Since graduating in 2017 and receiving the Sir Denis Mahon Award she has kept on drawing and painting in Lewisham, participating in group shows and artistic residencies in the UK, USA and Portugal and working with children and adults as an art educator. She's currently developing a new body of work for a solo show with Aleph Contemporary.

In addition to various international private collections, Galego's work is found in the Royal Collection Trust of the British Royal Family, UK. Recent solo exhibits include the Royal Drawing School, London, UK, 2019 and the Museu das Artes de Sintra, Portugal, 2016. The artist has participated extensively in group shows including Galeria da Junta de Freguesia de Santa Maria Maior, Lisbon, Portugal, 2019; British Museum, London, 2018; Cave Space, London, 2018; Leegate House, London, 2018; Royal Drawing School, London, 2017; Christie's King Street, London, 2017.



Go Gentle

Acrylic and oil on canvas

170x154cm

Joana Galego

£4400

email: info@carousel-london.com



Mother fleeing as a teen

Oil on linen

160x105cm

Joana Galego

not for sale



Study 1
Pencil/Pastel on paper
Joana Galego

not for sale



Study 2
Pencil/Pastel & Ink on paper
Joana Galego

not for sale



Study 3
Pencil/wash on paper
Joana Galego

not for sale





Melissa Kime

Melissa Kime studied Fine Art at University College Falmouth and completed The Drawing Year at The Royal Drawing School in 2012, where she won the Windsor and Newton Prize. She was selected for Bloomberg New Contemporaries 2014 and featured in Amelia's Magazine. Kime completed an MA in Painting at the Royal College of Art and participated in the 2020 London Art Fair.

"My paintings are set to a Roman Catholic backdrop they are cloaked in Catholic Folklore and magick. The women in my work perform rituals centred upon healing, jinx removal or the prevention of bad things happening-fertility spells and protection but mostly, these women are trying to connect together and survive, through the linking of menstrual blood, plaited hair and autobiographical experiences."

- Kime

Ode to ophelia, wrapped up in her daisy chains

Oil on canvas

220x170 cm

Melissa Kime

£10 000

email: info@carousel-london.com



Where do Angels go when they die?
Acrylic, watercolour and crayon on paper
21x29cm
Melissa Kime

£900

email: info@carousel-london.com



Ode to ophelia, wrapped up in her daisy chains

Mixed media

Sketchbook page

Melissa Kime

Not for sale

email: info@carousel-london.com

Rachel Mercer

Born in Cambridgeshire, Mercer studied at Cardiff School of Art and Design for her BA and graduated in 2012 before being awarded the postgraduate programme at Royal Drawing School. Since 2014 she has been a practicing artist and art educator in London. She co-founded Mercer Chance Gallery which she closed in 2018 to focus on her own practise.

She paints figures to express perception of the self; exploring reality through sensual and bodily experience. Human figures meet the world and each other, exploring physical and emotional connections through dynamic and contorted positions, evoking the figure's struggle for meaning and virtue. Space around figures becomes distorted or fragmented, reflecting their being-in-the-world.



Taking

Oil on Canvas
60x60cm
Rachel Mercer

£800

email: info@carousel-london.com



Alone Again
Oil on canvas
76x102cm
Rachel Mercer

£1200

email: info@carousel-london.com



Study For Fold, Michael in Bed

Ink on paper

19x14cm

Rachel Mercer

£190

email: info@carousel-london.com



Huddle
Oil on Canvas
100x120cm
Rachel Mercer

£1500

email: info@carousel-london.com



Study For Fold, Michael in Bed

Sepia ink & Goache on paper

19x14cm

Rachel Mercer

£150

email: info@carousel-london.com



Study For Fold, Michael in Bed

Goache on paper

19x14cm

Rachel Mercer

£120

email: info@carousel-london.com



Michael on Pontoon

15x10cm

2020

Rachel Mercer

£130

email: info@carousel-london.com



Drawing for Fold

Pencil on paper

27x20cm

Rachel Mercer

NFS

email: info@carousel-london.com

Tim Patrick

Having studied traditional portrait painting in Florence, Italy, Tim Patrick has subsequently attended the University of Brighton where he received First Class Honours, and in 2015 completed a postgraduate at The Royal Drawing School.

Patrick's work is grounded in encounter, working in situ and exploring a subject through different iterations and mediums. At the heart of the work is an pursuit of what it means to be in a place, and a painterly response to it.

He has recently been awarded the Elizabeth Greenshields Foundation Grant for emerging figurative artists. He undertook a residency in Venice in 2019 as part of the "Invisible Gardens" initiative. His work was featured in the 2018 Threadneedle Painting Prize and the 2019 Wales contemporary, and is the 2020 Artist in Residence at Trinity Buoy Wharf.



The RedRoom
Oil on linen
205x170cm
Tim Patrick

£6500

email: info@carousel-london.com



The RedRoom (Study)

Ink on paper

25x20cm

Tim Patrick

£200

email: info@carousel-london.com



Yu Shan's Room

Ink on paper

50x40cm

Tim Patrick

£750

email: info@carousel-london.com



Still Life I
Ink on paper
18x24cm
Tim Patrick

£150

email: info@carousel-london.com



Living Room

Ink on paper

18x24cm

Tim Patrick

£200

email: info@carousel-london.com



Curtain II
Montotype on paper
22x29cm
Tim Patrick

£160

email: info@carousel-london.com



Curtain II

Montotype on paper

29x25cm

Tim Patrick

£200

email: info@carousel-london.com



Michael Chinn

Michael Chinn is a professor of art and design at the University of North Carolina at Charlotte. He is also a member of the National Academy of Design and the National Academy of Arts. He has been teaching art for over 30 years and has been a member of the National Academy of Design and the National Academy of Arts. He has been a member of the National Academy of Design and the National Academy of Arts. He has been a member of the National Academy of Design and the National Academy of Arts.

Fraser Scarfe

Fraser Scarfe grew up in Lincolnshire, where he has worked from a studio since 2007. From 2008-09 Fraser was Artist in Residence at Lincoln Cathedral and had his first solo exhibition there at the end of 2009. In 2013 he studied at The Prince's Drawing School (now the Royal Drawing School) and since 2016 has held the role of Drawing Year Senior Manager, managing the postgraduate 'Drawing Year programme at the School.

Scarfe exhibits regularly in Lincoln and London, and his work was shown in 'The Best of The Drawing Year 2012-13' exhibition at Christie's international. In 2013 he won the Drawing Bursary at the 2013 ING Discerning Eye exhibition. As a painter, drawing has always been firmly at the core of Scarfe's practice. Scarfe's paintings and drawings always begin on location, a direct response to the landscapes (familiar or strange) that the artist finds himself in.



Tree in Liquorice Park
Charcoal on paper
115x115cm
Fraser Scarfe

£2200

email: info@carousel-london.com



Dry trees: Pignano

Oil on board

30x40cm

Tim Patrick

£650

email: info@carousel-london.com



Pignano Trees

Oil on board

60x40cm

Tim Patrick

£950

email: info@carousel-london.com



Hampstead Trees
Acrylic and oil on board
110x110cm
Fraser Scarfe

£2500

email: info@carousel-london.com

Eleanor Watson

Eleanor recently received an MA from City and Guilds of London Art School (2019). Previously completing The Drawing Year at The Royal Drawing School (2016) and receiving a BA at Wimbledon College of Art (2012). She was winner of the prestigious Jonathan Vickers Fine Art Award 2017, the ACS City and Guilds Studio Prize and the Slaughterhaus Print Prize 2019.

Eleanor works primarily in paint and print. Her most recent works frame moments of light; passing across objects within the home. Melancholic images are washed in colour and come in and out of focus; creating quiet moments in which to contemplate memory, and longing in image-making.



The Doors No Longer Hang True

Oil on canvas

100x80cm

Eleanor Watson

£4500

email: info@carousel-london.com



Shifting Clarities
Watercolour on paper
71x51cm
Eleanor Watson

£800

email: info@carousel-london.com



With No Windows of Mirrors

Watercolour on paper

18.7x13.5cm

Eleanor Watson

£180

email: info@carousel-london.com



Cast New Light

Watercolour and gouache on paper
37x26cm (each)
Eleanor Watson

£700

email: info@carousel-london.com



The Dusk Afterwards 2

Watercolour on paper

72.8x54cm

Eleanor Watson

£800

email: info@carousel-london.com



Dresser

Oil on paper
33x23cm

Eleanor Watson

£400

email: info@carousel-london.com



The Doors No Longer Hang True 2
Watercolour and gouache on paper
148x111cm
Eleanor Watson

£1400

email: info@carousel-london.com



Blue Tablecloth
Watercolour on paper
37.5x25cm
Eleanor Watson

£400

email: info@carousel-london.com



A Little Sightless

Oil on paper

36x24cm

Eleanor Watson

£400

email: info@carousel-london.com



Full of Vast Landscape

Watercolour on Paper

13.4x18.1cm

Eleanor Watson

£180

email: info@carousel-london.com

With thanks to Carousel, the artists
involved, Julian Bell and the Arts
Council for support.

